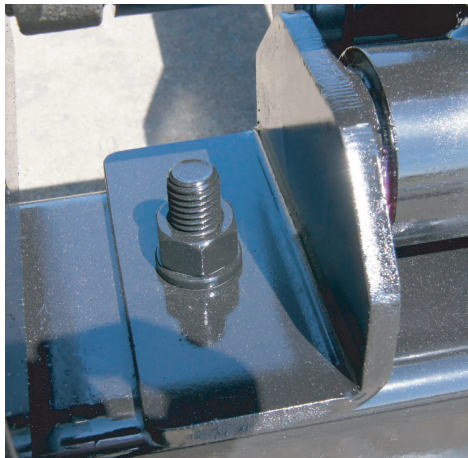




Shown is one of the class C & D conversion subframe rear hinges complete with integrated Zerk grease fitting and solid hinge pin.



The CS515T and CS615T conversion hoists conveniently bolts directly to the subframe crossbeam. using grade 8 bolts.



Each conversion subframe includes specialized mounting hardware designed specifically to fit over factory installed chassis bolts. Hardware also included grade 8 mounting bolts.

Application Specifications

This class C & D conversion subframe is designed to be used with 8' to 13' bodies. This frame coupled with a CS515T conversion hoist provides ample lifting capacity for 8' and 9' bodies. For 10' to 13' bodies, a CS615T conversion hoist is required. All major hoist components are shot blasted and powder coated. The integrated body safety prop is designed to fold up and under the frame of the body eliminating the need for a prop cup. This frame also features sturdy front mounted body guides, integrated pre-drilled pump mounting plate, grommeted cutouts for trouble free hydraulic hose routing, and is compatible with both formed and stacked understructures. This frame is shipped with hoist pre-installed and ready to be mounted. The CS515T and CS615T hoists feature Zerk grease fittings at all pivot points and industry leading certified 100K steel construction. The hoist mounts above the subframe with no parts hanging below. Hydraulic cylinders are manufactured by Champion, so the entire hoist is covered under Champion's 3 year warranty.

Options like various lift point hardware, Zinc primer, and hydraulic package are available.



Each class C & D conversion subframe includes two oval knock-out panels to allow for fuel fill hoses, wiring, and hydraulic plumbing as needed.

Champion Hoist and Equipment™
200 Champion Drive
Dunn, NC 28334
1-800-649-4995 Fax 910-897-7306