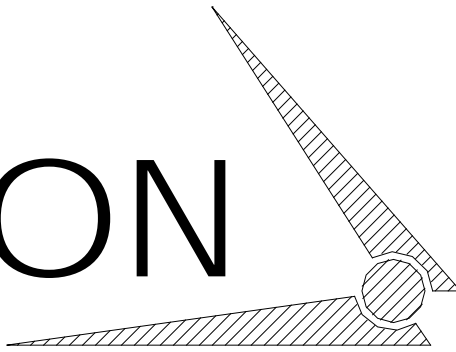


# CHAMPION

Hoist and Equipment

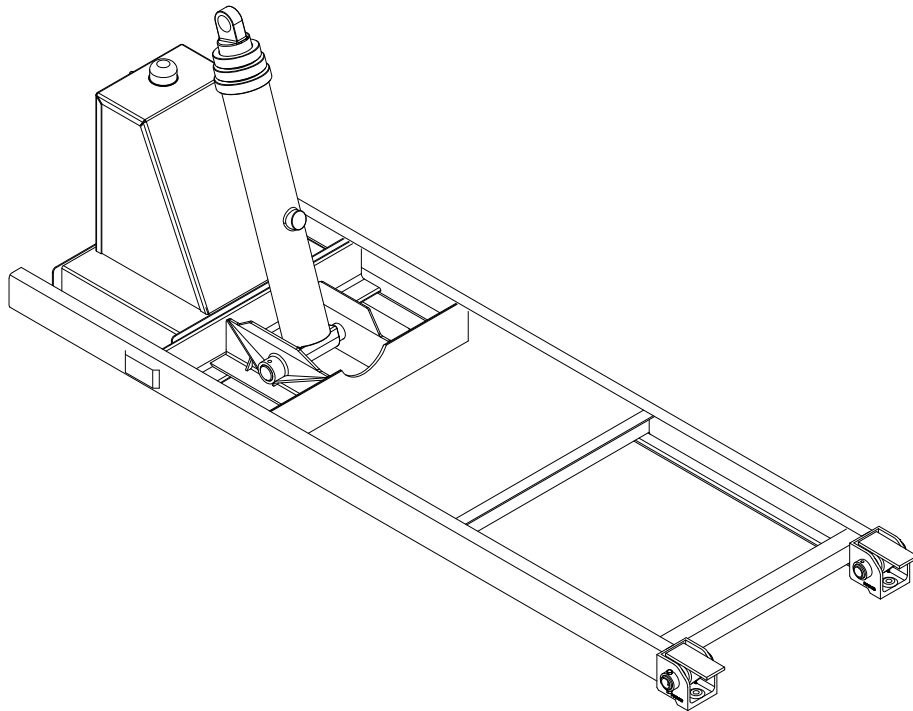


AN AFFILIATE OF

The **Godwin**  
Group

200 CHAMPION DRIVE  
DUNN, NC. 28334  
(910) 897-4995 FAX: (910) 897-7306

## TELESCOPIC HOIST 5384/5372 FRONT MOUNT



Operation & Installation Manual

***CHAMPION HOIST & EQUIPMENT***

200 Champion Drive

Dunn, N.C. 28334

800-649-4995

2/2008

# FRONT MOUNT TELESCOPIC

## Table of Contents

Page 4	Service Information
Page 5-6	Operations and Service Do's & Don'ts (SAFTY INFORMATION)
Page 7	Hoist Operation Instructions
Page 8-10	Champion Subframe Hoist Installation Procedures
Page 11	Safety Prop Installation
Page 12	Lubrication Points
Page 13	Instructions to Reverse a C102 Pumps Rotation
Page 14	Hydraulic Plumbing Diagram
Page 15	Stop Cable Installation



# CHAMPION HOIST AND EQUIPMENT

200 CHAMPION DRIVE  
DUNN, N.C. 28334

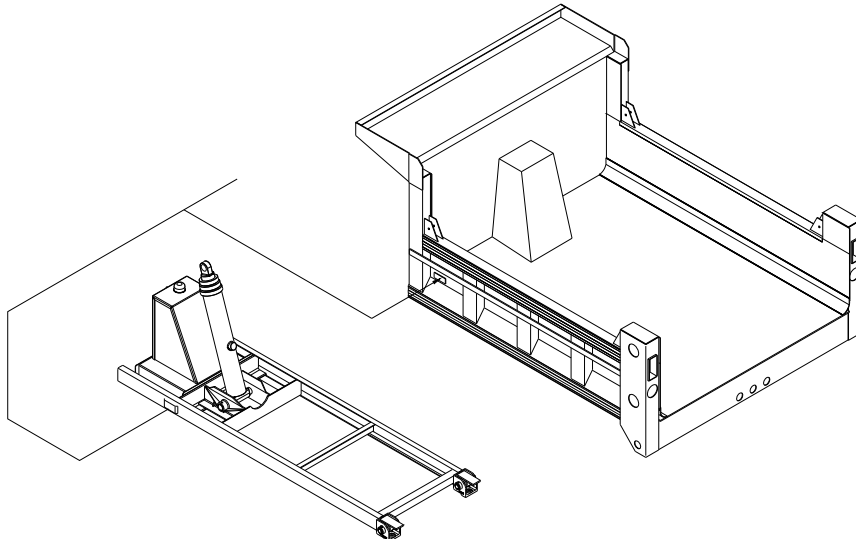
Phone# (910) -897-4995

Phone# (800) -649-4995

fax# (910) -897-7306

When calling, specify (parts) - (service) - (sales)  
have the following information on hand for  
faster service: body model # & serial #  
hoist model # & serial #  
year, make, type of truck.

this information is provided as indicated

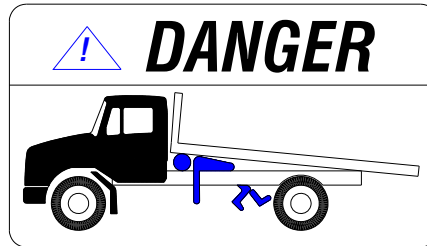


## Operations and Service Manual

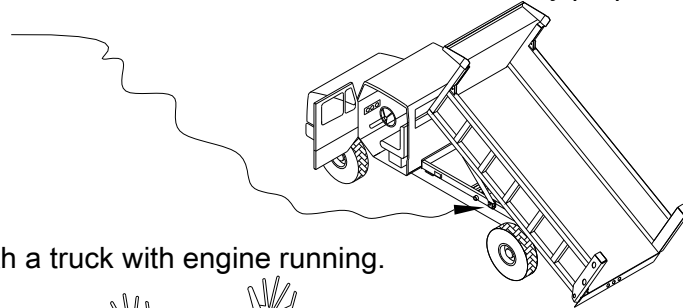
Do not operate this equipment without fully reading and understanding this manual.

Do not allow unauthorized personnel to operate this equipment.

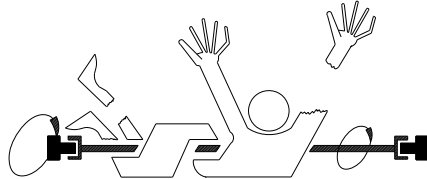
Do not go underneath a loaded raised bed under ANY circumstances.



Do not go underneath an unloaded raised bed unless the safety props are properly positioned.



Do not go underneath a truck with engine running.



Do not allow controls and area around them to become cluttered with tools, cans, etc.

Do not use hands or other body parts to check for hydraulic leaks.

Do not leave truck unattended with bed raised.

Do not allow personnel to ride in or on the bed.

Do not load the equipment beyond the GVW rating of the vehicle or the hoist rating.

Do not operate the hoist on an unlevel or soft surface.

Do not operate the hoist **UNDER POWER LINES!!**

Do not raise the hoist when vehicle is in motion.

Do not move a vehicle with a raised hoist.

Be sure to.....

- \* Follow all Federal, State, Local regulations pertaining to this equipment.
- \* Keep unit properly maintained and serviced.
- \* Understand and follow all safety decals and keep them in good condition.
- \* Check hydraulic oil level each time truck is serviced.
- \* Add correct hydraulic oil to reservoir as needed.

**PTO PUMP APPLICATIONS**

***CAUTION***  
***USE HYDRAULIC OIL ONLY!***  
***TEXACO RANDO HD 32***  
***EXXON NUTO HD 32***  
***SHELL TELLUS HD 32***  
***OR COMPARABLE***

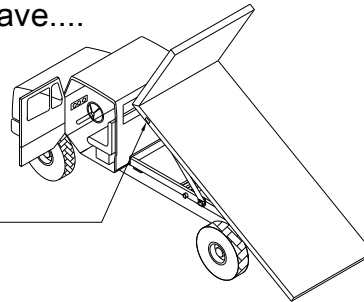
- \* Grease hoist and rear hinge assembly each time truck is serviced.

---

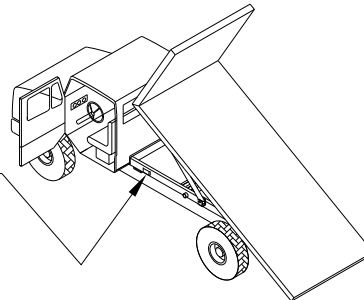
---

When calling for Parts/Service Be Sure To Have....

Flatbed: model number \_\_\_\_\_  
serial number \_\_\_\_\_  
Serial Plate Location \_\_\_\_\_



Hoist: model number \_\_\_\_\_  
serial number \_\_\_\_\_  
Serial Plate Location \_\_\_\_\_



# HOIST OPERATION

## To Operate Hoist:

- (1) Engage PTO per PTO operation instructions.
- (2) The pump/hoist control should be in the neutral or “hold” position.
- (3) For a manual control - pull to raise, push to lower.  
NOTE: Manual push/pull controls require a 1/2 inch mounting hole.
- (4) When bed raises to desired height, push the pump/hoist controls to the center neutral or “hold” position. This will stop bed movement up or down.
- (5) To lower bed - push pump/hoist control.
- (6) Disengage PTO.

# GODWIN MANUFACTURING FRONT MOUNT TELESCOPIC HOISTS INSTALLATION INSTRUCTIONS

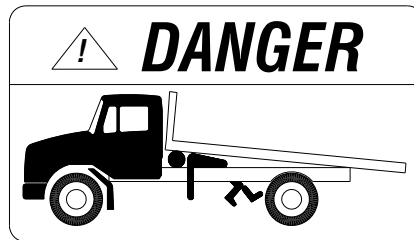
REFER TO MP50096

- STEP #1 MOUNT SUBFRAME ON CHASSIS AT THE SPECIFIED C.H. DIMENSION.
- STEP #2 AFTER SUBFRAME HAS BEEN MOUNTED ON CHASSIS USING THE CORRECT C.H. DIM., MARK CHASSIS BEHIND SUBFRAME & SLIDE SUBFRAME FORWARD AND REMOVE EXCESS CHASSIS.
- STEP #3 RETURN SUBFRAME TO CORRECT MOUNTING POSITION.
- STEP #4 AFTER SECURING MOUNTING ANGLE TO SUBFRAME, DRILL (4) 1/2" HOLES THRU ANGLE & CHASSIS, AND INSTALL HARDWARE (EACH SIDE) .  
DO NOT TIGHTEN HARDWARE UNTIL COMPLETING STEP #6.
- STEP #5 DRILL (1) 5/8" HOLE (EACH SIDE) IN CHASSIS TO SECURE THE REAR OF SUBFRAME & INSTALL HARDWARE.
- STEP #6 TIGHTEN MOUNTING ANGLE HARDWARE & REAR SUBFRAME HARDWARE.
- STEP #7 INSTALL PUMP ON PTO AND PLUMB HOSES & FITTINGS AS SHOWN ON PD40031.  
NOTE: BEFORE INSTALLING C102 PUMP, SEE MP50078.
- STEP #8 INSTALL HYDRAULIC CONTROL HANDLES IN CAB.
- STEP #9 AFTER SECURING SUBFRAME & COMPLETING PLUMBING, SET BODY ON SUBFRAME APPROXIMATELY 3" AWAY FROM CAB & PARALLEL WITH SUBFRAME & CHASSIS.
- STEP #10 AFTER BODY IS SET, INSTALL REAR FLIPPERS ON SHAFT.
- STEP #11 SECURELY WELD REAR HINGE FLIPPERS TO BODY MAIN RUNNERS AT ALL POINTS OF CONTACT.
- STEP #12 ATTACH SAFETY PROP AS SHOWN IN MP50054.  
NOTE: SAFETY PROP SHOULD BE MOUNTED SO THAT THE PROP IS ANGLED SLIGHTLY TO THE REAR OF THE TRUCK.

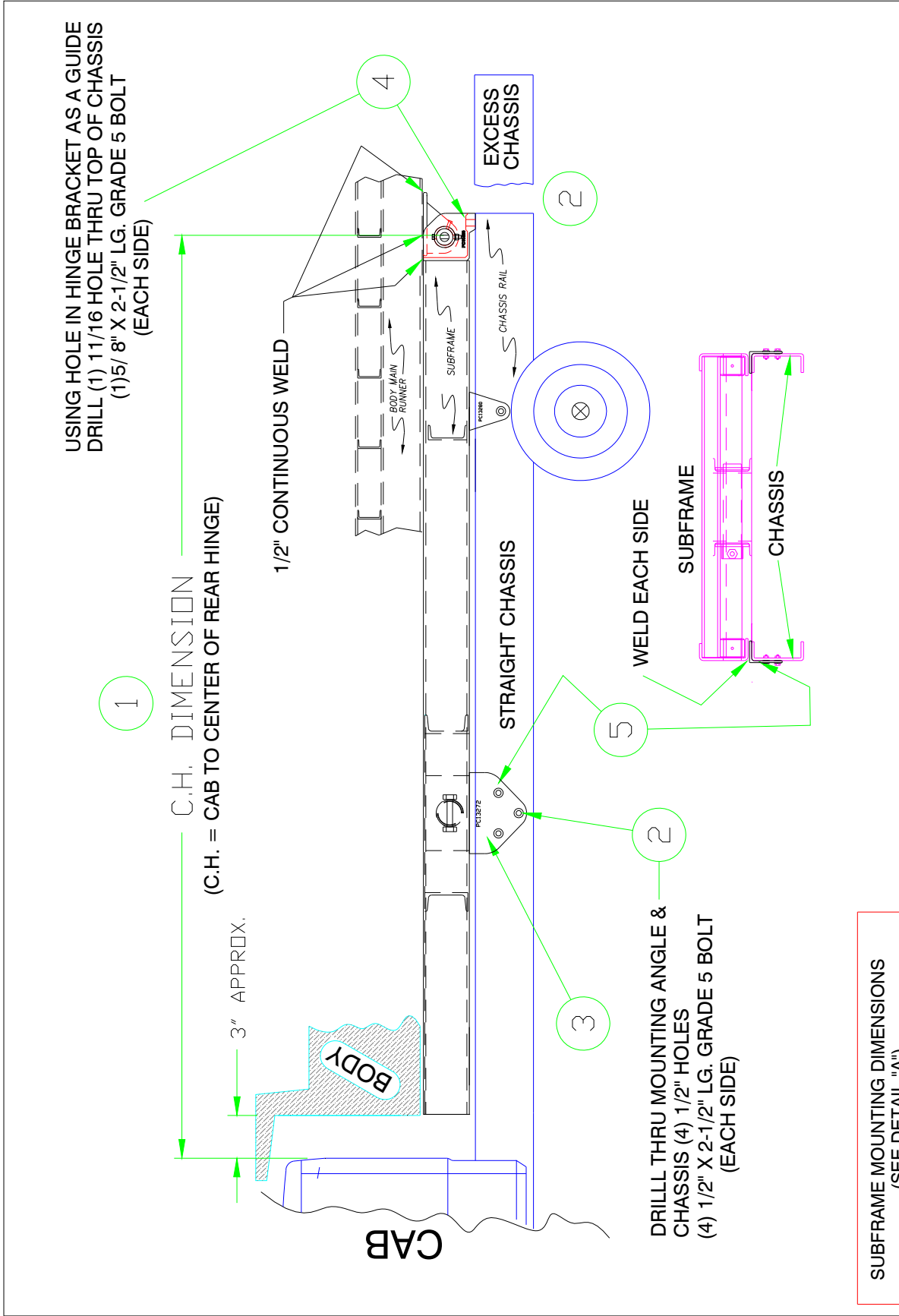


## INSTALLATION INSTRUCTIONS

- STEP #13 USING HOIST POWER, EXTEND CYLINDER SHAFT AS NEEDED AND ATTACH CYLINDER TO UPPER BUNK ON BODY.
- STEP #14 USING HOIST POWER, RAISE BODY AS NEEDED AND LOCATE & MARK POSITION THE SAFETY PROP CUP IS TO BE INSTALLED.
- STEP #15 AFTER MARKING POSITION OF SAFETY PROP CUP, LOWER BODY BACK TO SUBFRAME, (NOTE: NEVER WORK ON A RAISED EMPTY BODY WITHOUT SAFETY PROPS IN PLACE ) !!



- STEP #16 WITH BODY LOWERED, INSTALL PROP CUP AND WELD SECURELY.
- STEP #17 RE-INSPECT ALL WELDS AND CHECK HYDRAULICS FOR LEAKAGE REPAIR AS NEEDED.
- STEP #18 AFTER COMPLETING STEP #17, INSTALL BODY STOP CABLE (SEE MP50090 ) . INSTALL CABLE ON PUMP USING A 1/8" CABLE CLAMP AND TIGHTEN SECURELY. THEN FABRICATE STOP BLOCK MOUNTING PAD, WELD SECURELY TO THE LAST BODY CROSS SILL AS INDICATED ON MP50090. NOW MOUNT AND WELD STOP BLOCK TO PAD, AFTER COMPLETING, ELEVATE THE BODY TO THE DESIRED HEIGHT AND PULL CABLE THRU STOP BLOCK AND TIGHTEN SET SCREW. THEN RAISE BODY AND TEST STOP CABLE ASSEMBLY TO ENSURE IT IS WORKING PROPERLY.
- STEP #19 GREASE ALL PIVOT POINTS USING MP50093 THAT SHOWS ALL GREASE-FITTING LOCATIONS.



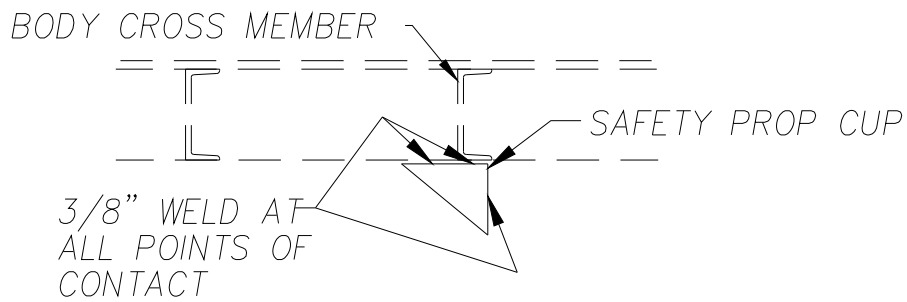
SUBFRAME MOUNTING DIMENSIONS (SEE DETAIL "A")			
BODY LENGTH	9"	10"	11"
C.H. DIMENSION	100"	112"	124"

FRONT MOUNT TELESCOPIC  
HOIST INSTALLATION

CHAMPION  
HOIST AND EQUIPMENT

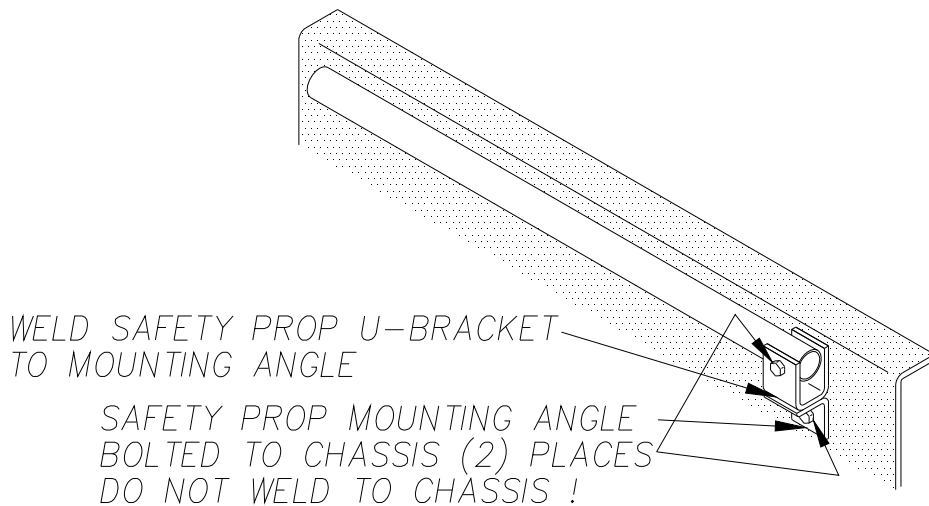
MP50096

## DETAIL "A"



LOCATE SAFETY PROP CUPS ON BODY MAIN RUNNER SO THAT THE SAFETY PROP IS ANGLED SLIGHTLY TO THE REAR. ALSO, BE SURE CUPS ARE SUPPORTED BY A BODY CROSS CHANNEL.

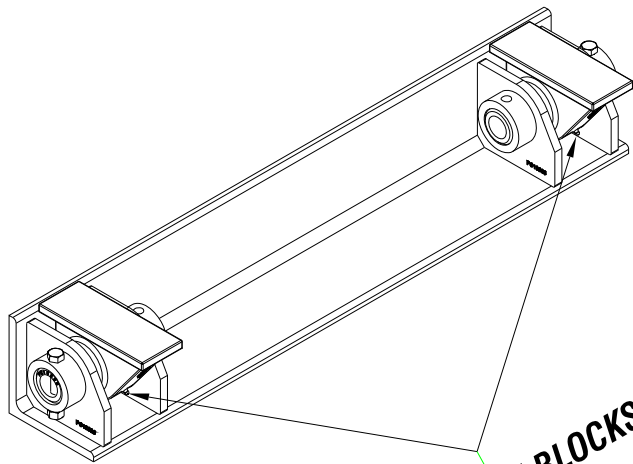
## DETAIL "B"



SAFETY PROP INSTALLATION

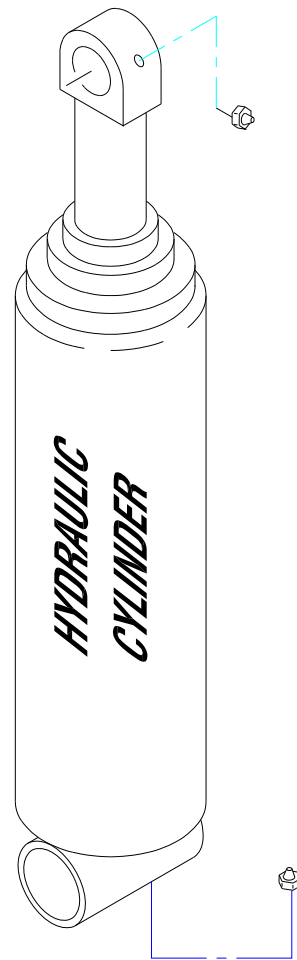
CHAMPION  
Hill and Equipment

MP50054



**REAR HINGE BLOCKS**

**2 PLACE ON TELESCOPIC  
CYLINDERS**



**NOTE: USE GENERAL PURPOSE CHASSIS GREASE**

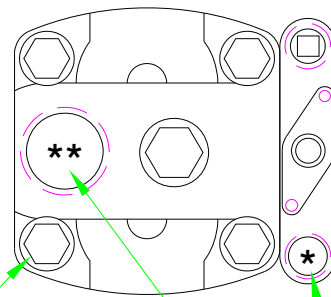
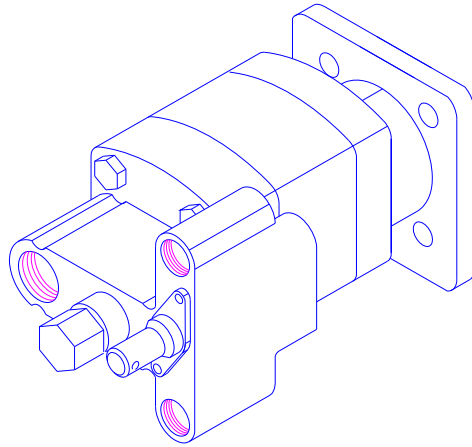
**\* Grease hoist and rear hinge assembly each time truck is serviced.**

**LUBRICATION POINTS**

**CHAMPION**  
Hoist and Equipment

**MP50093**

## INSTRUCTIONS TO REVERSE C102 PUMP ROTATION



STEP #1 SECURELY MOUNT PUMP FLANGE IN VISE  
SHAFT DOWN!

STEP #2 REMOVE (4) HEX BOLTS, WASHERS.

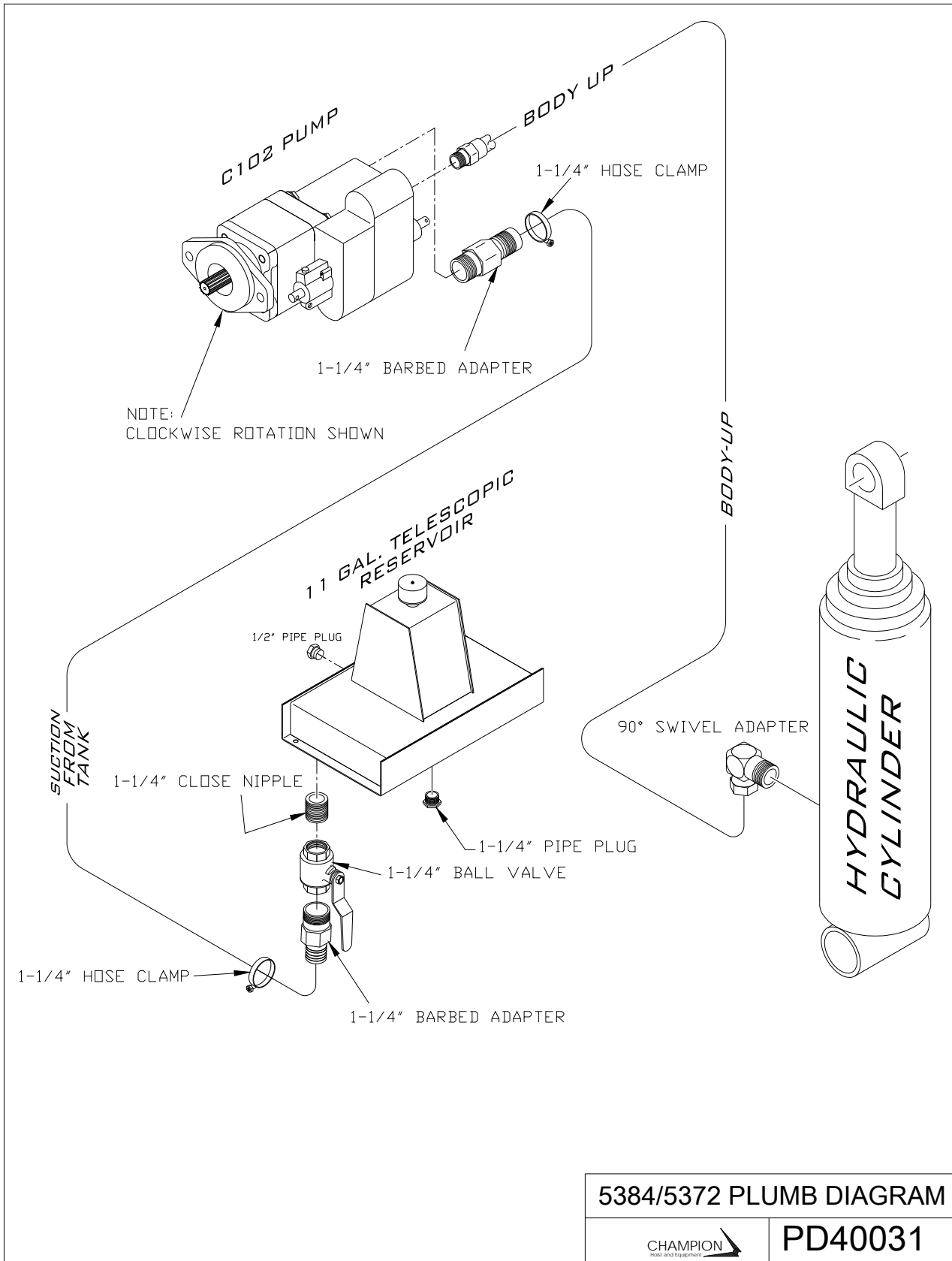
\*\* SUCTION PORT

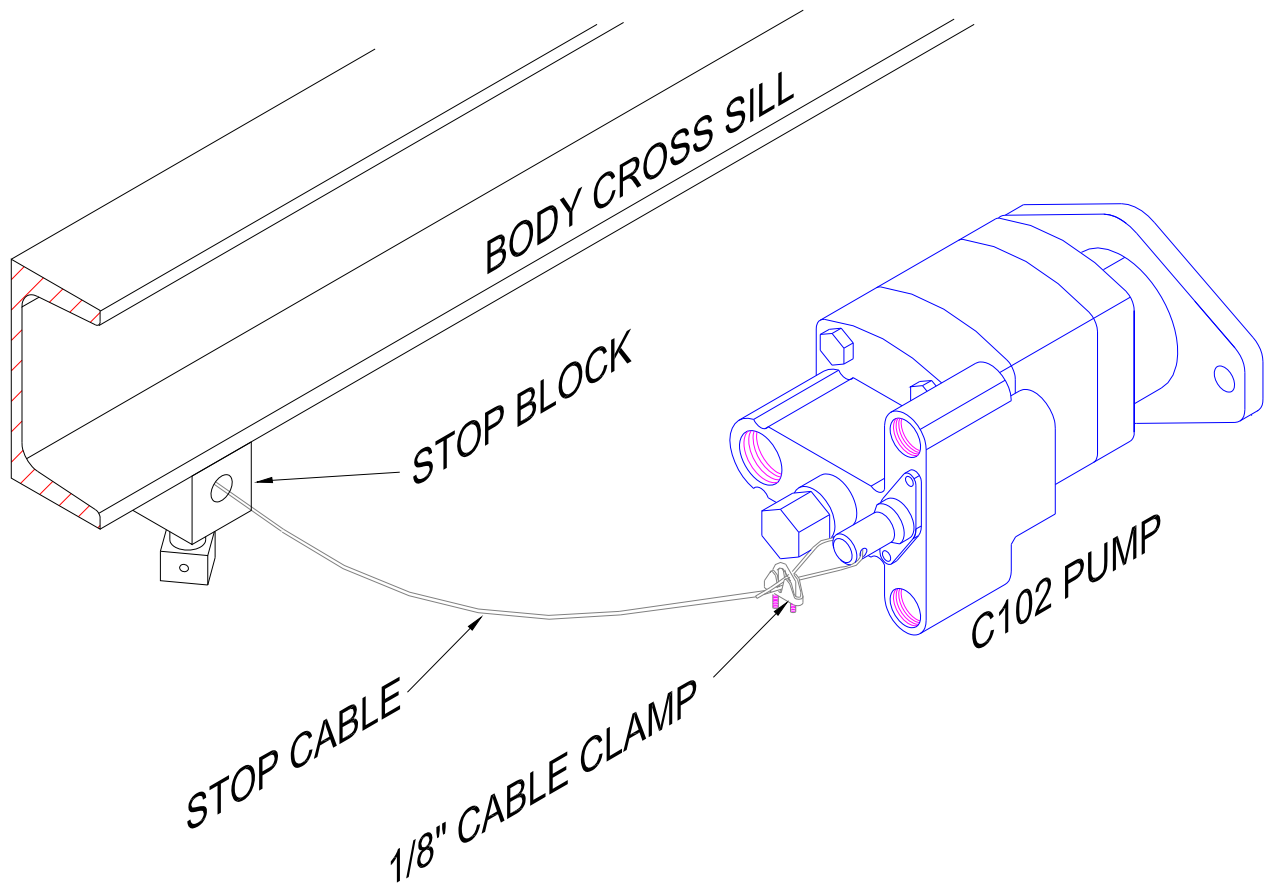
STEP #3 LIFT OFF VALVE AND CENTER SECTION OF  
PUMP LEAVING FRONT COVER AND GEARS  
IN PLACE, AND ROTATE 180°.

\* CYLINDER PORT

STEP #4 LOWER CENTER SECTION AND VALVE ONTO  
FRONT COVER AND GEARS BEING CAREFUL  
NOT TO DISTURB POCKET SEALS IN TRUST  
PLATES. (IF NEEDED GLUE IN WITH CHASSIS  
GREASE) .

STEP #5 REINSTALL BOLTS AND WASHERS AND EVENLY  
TORQUE ASSEMBLY BOLTS TO 200 FOOT LBS.





**STOP CABLE INSTALLATION**



**MP50090**